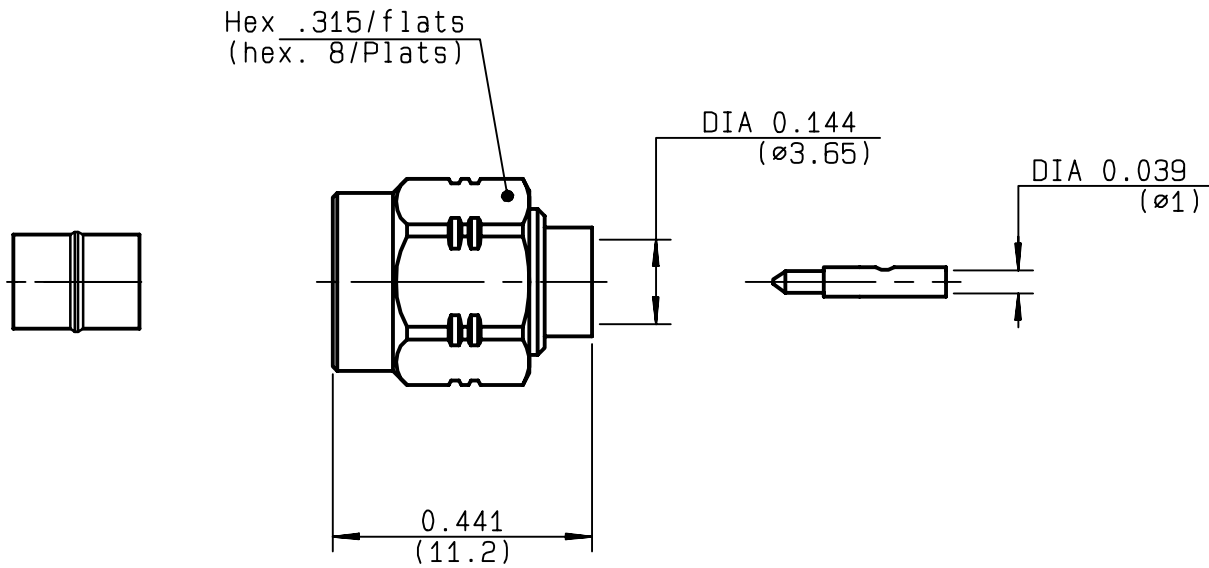


**STRAIGHT PLUG SOLDER TYPE  
CABLE .141**

**R124.055.003**  
**SERIES SMA-COM**



NOMINAL IMPEDANCE	<b>50</b> Ω
FREQUENCY RANGE	<b>0-18</b> GHz
TEMPERATURE RATING	<b>-65/+105</b> °C
V.S.W.R	<b>1.05</b> + <b>.01</b> x F(GHz)Maxi
RF INSERTION LOSS	<b>0.05</b> √F(GHz) dB Maxi
VOLTAGE RATING	<b>500</b> Veff Maxi
DIELECTRIC WITHSTANDING VOLTAGE	<b>1000</b> Veff Mini
INSULATION RESISTANCE	<b>5000</b> MΩMini
HERMETIC SEAL	<b>NA</b> Atm.cm <sup>3</sup> /s
LEAKAGE (pressurized only)	<b>NA</b>
MECHANICAL DURABILITY	<b>100</b> Cycles
WEIGHT	<b>2.3</b> gr
SPECIFICATION	

CABLES : <b>KS 2</b> <b>RG 402</b>	
OTHERS CHARACTERISTICS	
CABLE RETENTION	<b>270</b> N Mini
CENTER CONTACT RETENTION	
Axial force - mating end	<b>NA</b> N Mini
Axial force - opposite end	<b>NA</b> N Mini
Torque	<b>NA</b> cm.N Mini
RECOMMENDED TORQUES	
Mating	<b>60</b> cm.N
Panel nut	<b>NA</b> cm.N
Clamp nut	<b>NA</b> cm.N

CONNECTOR PARTS	MATERIALS	FINISH (all values are given in micrometers)
BODY	STAINLESS STEEL	GOLD 0.2 OVER NICKEL 2
OUTER CONTACT		
CENTER CONTACT	BRASS	GOLD 1.3 OVER COPPER 2.5
INSULATOR	PTFE	-
GASKET	SILICONE RUBBER	-
OTHERS PIECES	BRASS	GOLD 0.2 OVER NICKEL 2

ISSUE	CREATION DATE	FILE PART-NUMBER
<b>9901B00</b>	<b>16/07/1996</b>	<b>96-1200-061</b>



**RADIALL**®

TRIQUES

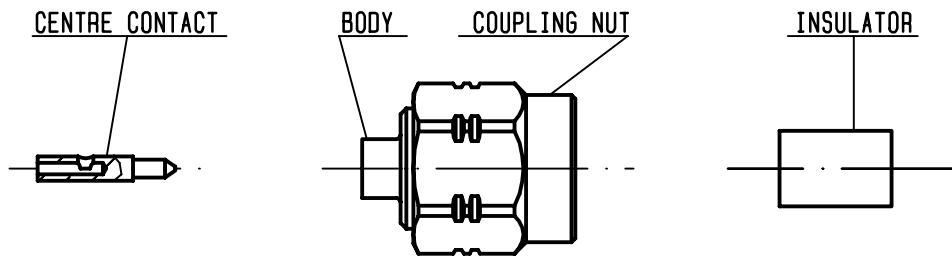
The information given here is subject to change without notice.  
Design changes may be in order to improve the product .

*Connect to the future*



**R124.055.003**

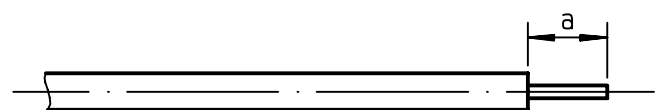
ISSUE 9901B00 SERIES SMA-COM



We recommend a cable thermal preconditioning before assembling

①

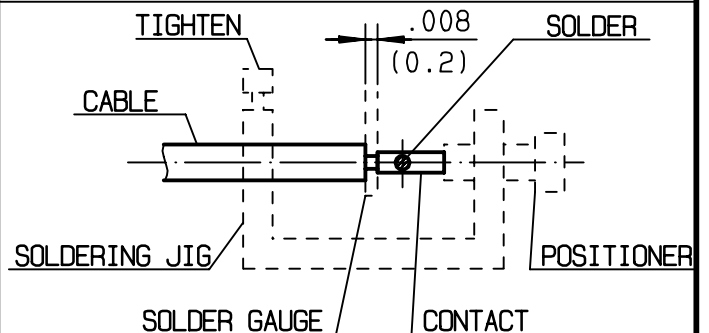
Strip the dielectric of the cable .  
 Stripping tool cable : R 282 053 000.  
 Trimmer : R 282 067 000 .  
 Clean the cable .  
 -



Stripping	a	b	c	d	e
inch	0.125 0	0	0	0	0
mm	3.17				

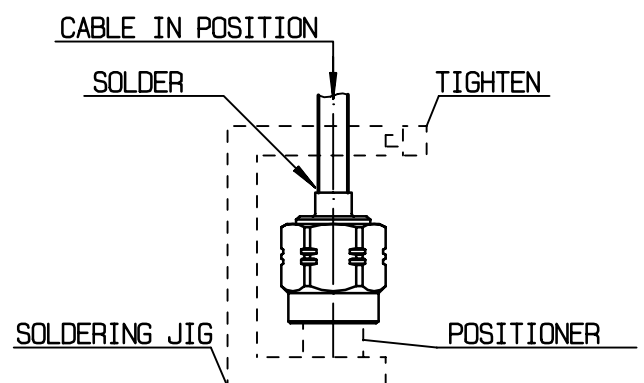
②

Screw the positioner R 282 744 220 onto the soldering jig R 282 740 000 .  
 Slide contact into positioner .  
 Insert solder gauge R 282 862 060 (62) between contact and cable .  
 Tighten and solder the contact .



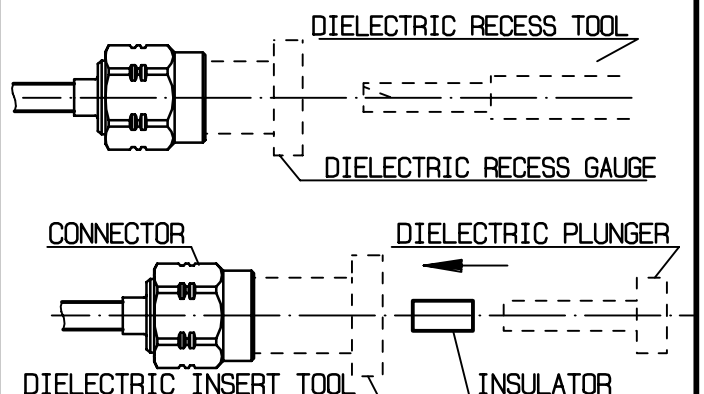
③

After cooling remove cable assembly from the jig .  
 Screw positioner R 282 744 061 (87) into the connector .  
 Slide cable into the connector until it bottoms againsts positioner .  
 Tighten .  
 Put 3 rings of solder around the cable and solder .



④

After cooling remove cable assembly from the jig .  
 Screw dielectric recess gauge R282 914 000(93) and trim dielectric with the dielectric recess tool R 282 915 010.  
 Screw female dielectric insert tool onto connector and insert insulator with the dielectric plunger R 282 730 040 .



TRIQUES